



REGIONAL SUMMIT ON SUSTAINABLE FUNDING FOR IN-HOME ASTHMA INTERVENTIONS

Region 2: New Jersey, New York, Puerto Rico, US Virgin Islands, and Tribal Nations

November 20, 2015 | Stern Auditorium | Mount Sinai Hospital

Twitter: [#Region2AsthmaSummit](#) & [#RxHealthyHomes](#)

Email photos to: Rachel.Manning@mountsinai.org

Uniting Stakeholders to Shift the Focus to Asthma Preventive Care

- Ameesha Mehta-Sampath, MPH, LEED-AP; US EPA Region 2
- Tanya Pagán Raggio-Ashley, MD MPH FAAP; DHHS HRSA ORO New York Regional Office
- Maida P. Galvez, MD, MPH, FAAP; Icahn School of Medicine at Mount Sinai



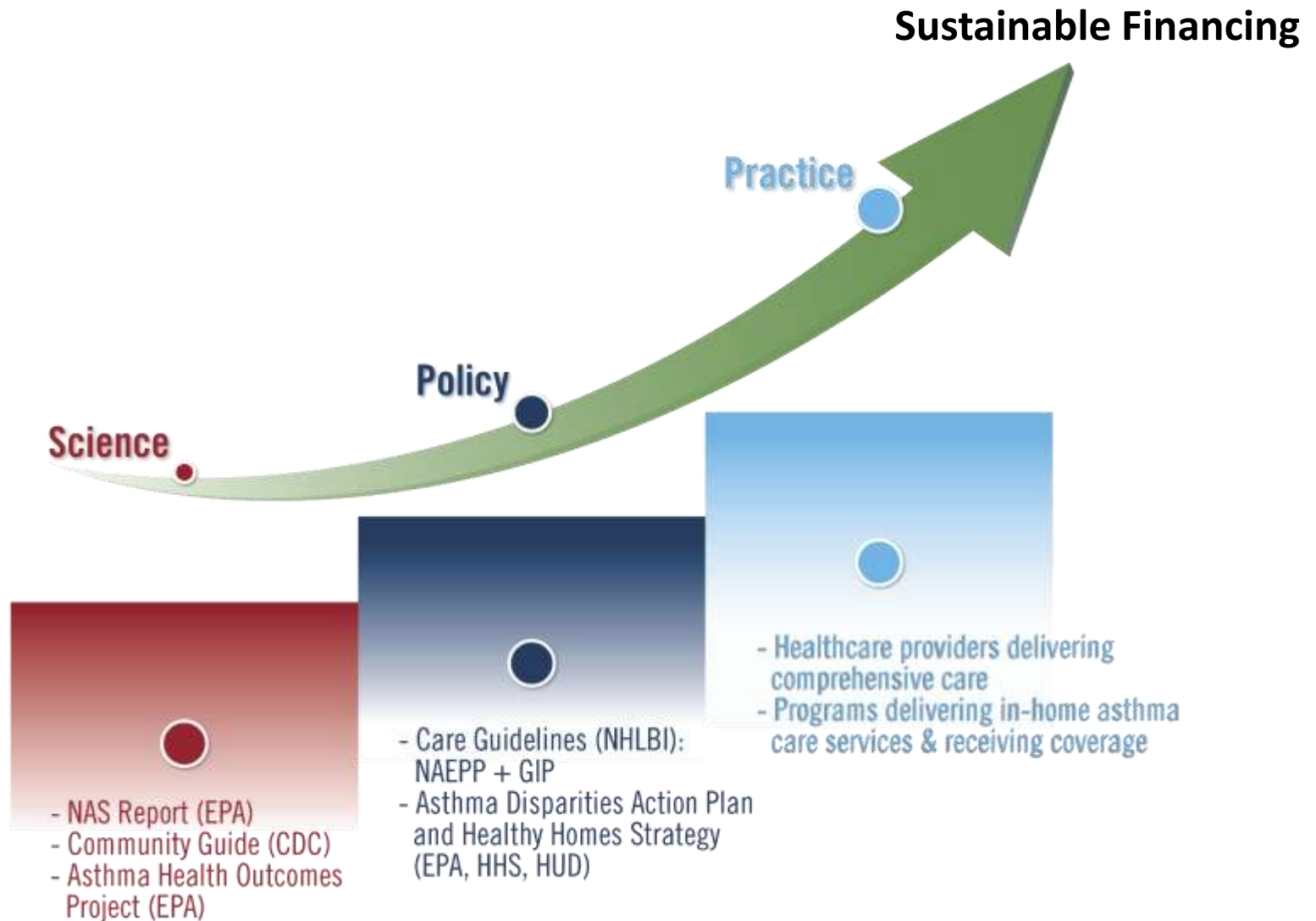
Current Asthma Prevalence Rates BRFSS 2013

	Children	Adults
New York	9%	10%
New Jersey	9%	9%
Puerto Rico	14%	10%
US Virgin Islands	~4%	

Healthcare Costs

- **\$65 billion**: estimated annual cost of housing-related illness & injury nation-wide
- **\$1.3 billion**: NYS annual cost of asthma in direct medical costs and lost productivity

Key Stages of EPA's Asthma Program



EPA's Goal is to Influence and Equip Programs to Act

Partnerships with Feds, States, Territories, Tribes, NGOs, Foundations, Academic Institutions and Communities

- National Center for Healthy Housing
- America's Health Insurance Plans
- ALA Upper Midwest
- Public Health Institute/RAMP



Health Insurance Plan Strategies for Managing Asthma and Reducing Exposure to Environmental Triggers

In collaboration with the U.S. Environmental Protection Agency



2015 National Health Plan Assessment – Perspectives on Asthma Management

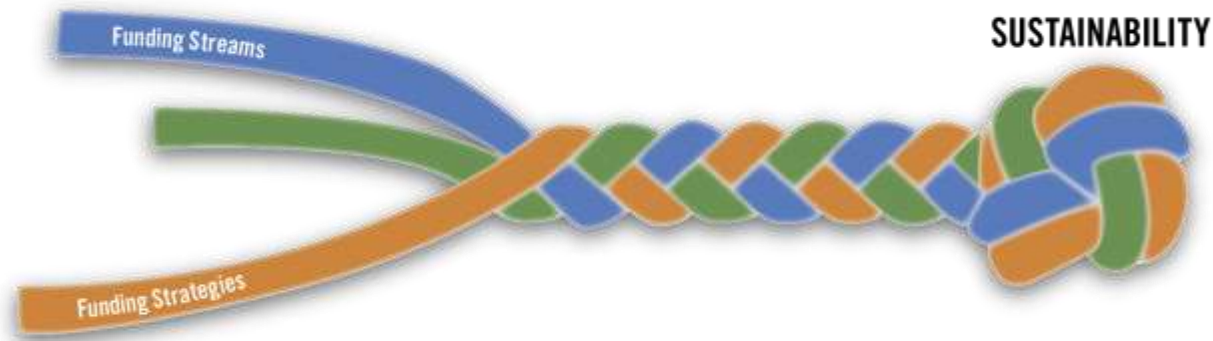
100% of Medicaid and 79% of Commercial plans find it important to assist members with comprehensive asthma management.

89% of Medicaid and 55% of Commercial plans think it's important to assist with environmental asthma management specifically, though 38% of Commercial plans are unsure of importance.

Nearly all of Medicaid (93%) and two thirds of Commercial (66%) agree that environmental asthma management can reduce unnecessary healthcare utilization.

44% of Medicaid and 69% of Commercial plans are unsure, or do not believe that all members with asthma should have access to home-based assessment.

Sustainable Funding Options



Funding Streams

Health

State Medicaid

Health Plans

Housing

Community Development

Block Grants

Healthy Homes Programs

Weatherization Programs

(utilities)

Code Enforcement

Funding Strategies

Emerging

Opportunities

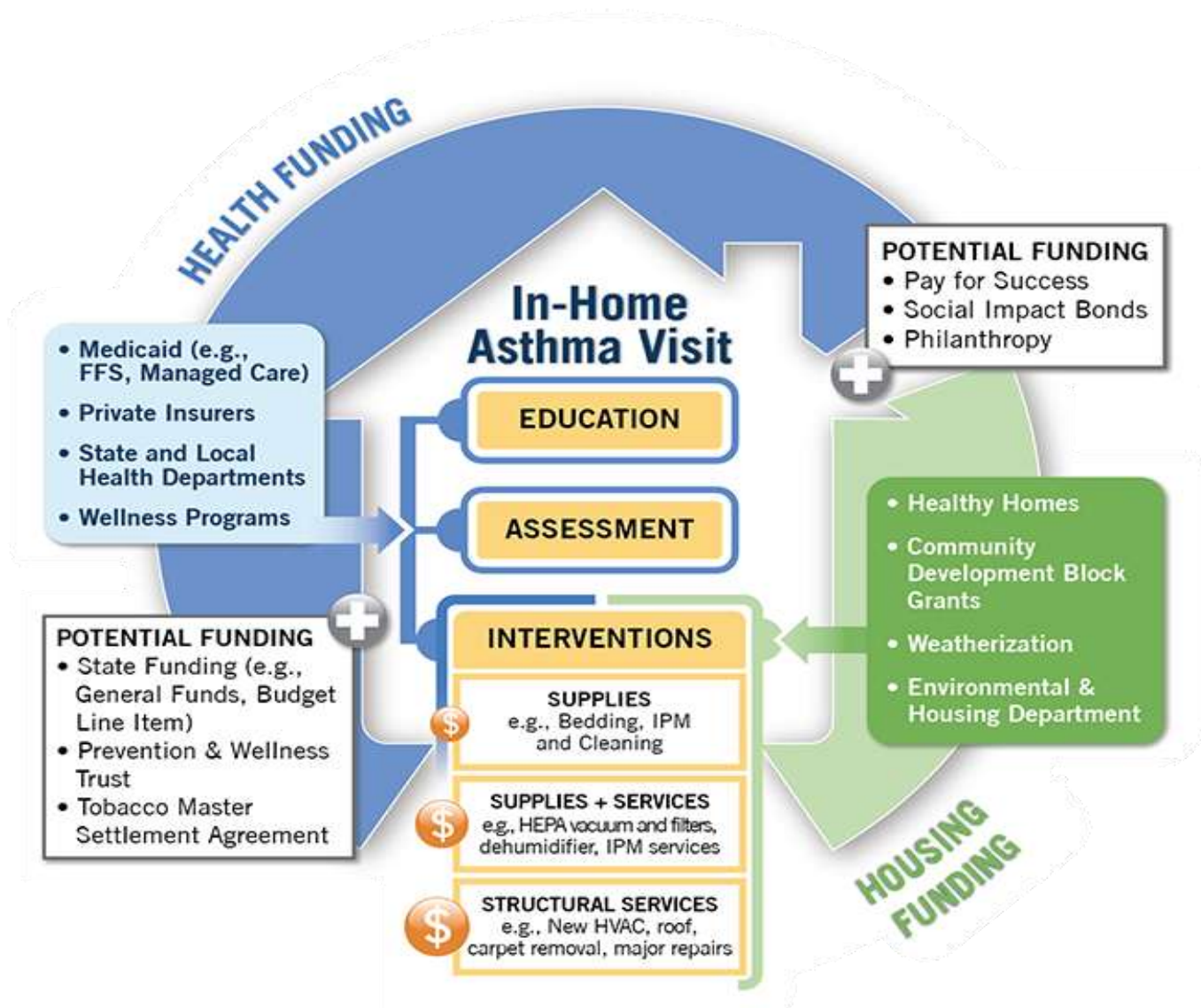
Social Impact Bonds

BRAIDED FUNDING

www.asthmacommunitynetwork.org

- In-home asthma care programs often braid separate funding streams together
- Pay for more services than any one stream can support on its own
- Carefully track expenditures to report back on how money was spent

www.asthmacommunitynetwork.org/financing



The Walls that Speak...

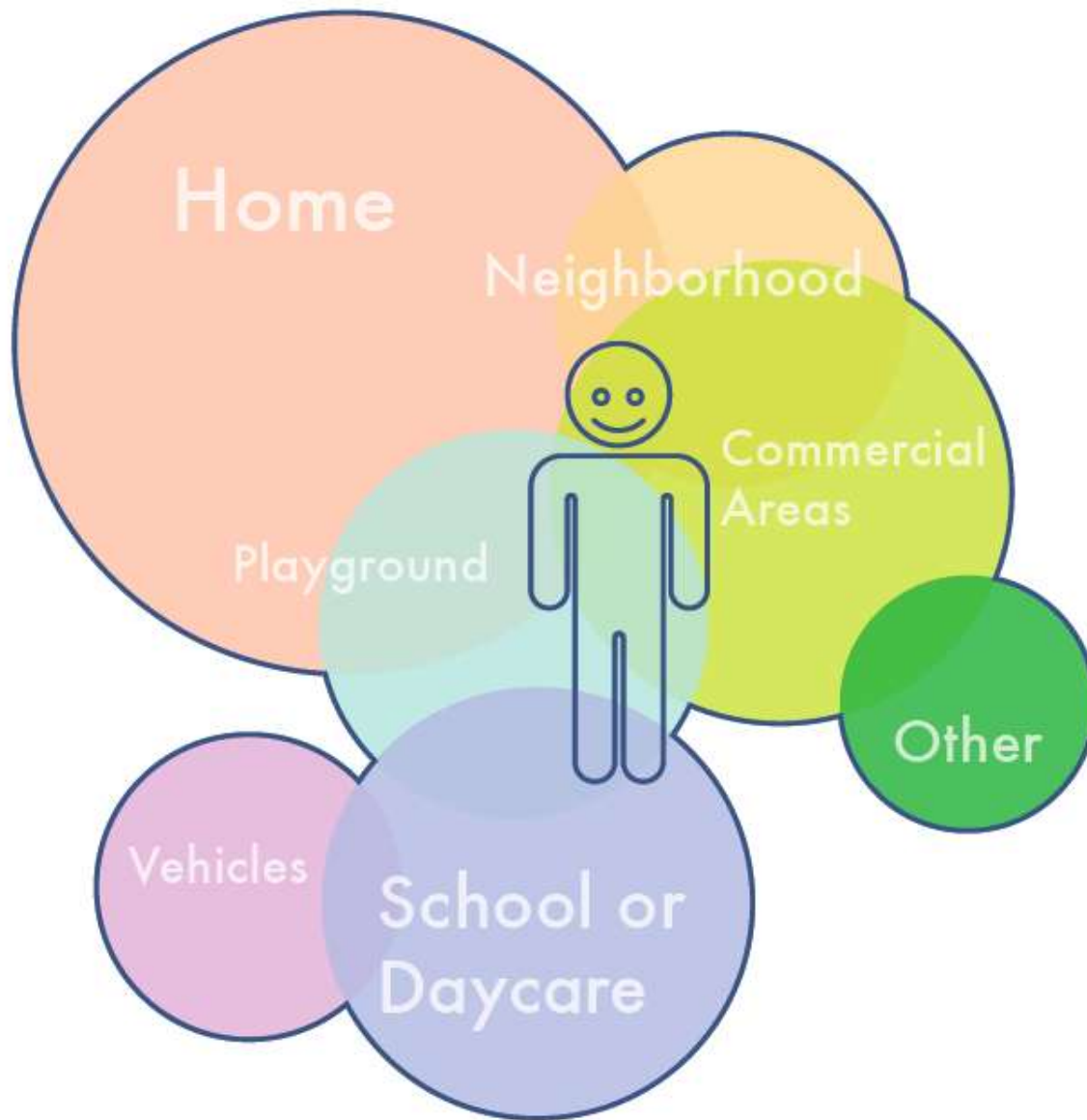




Poet Nicholasa Mohr

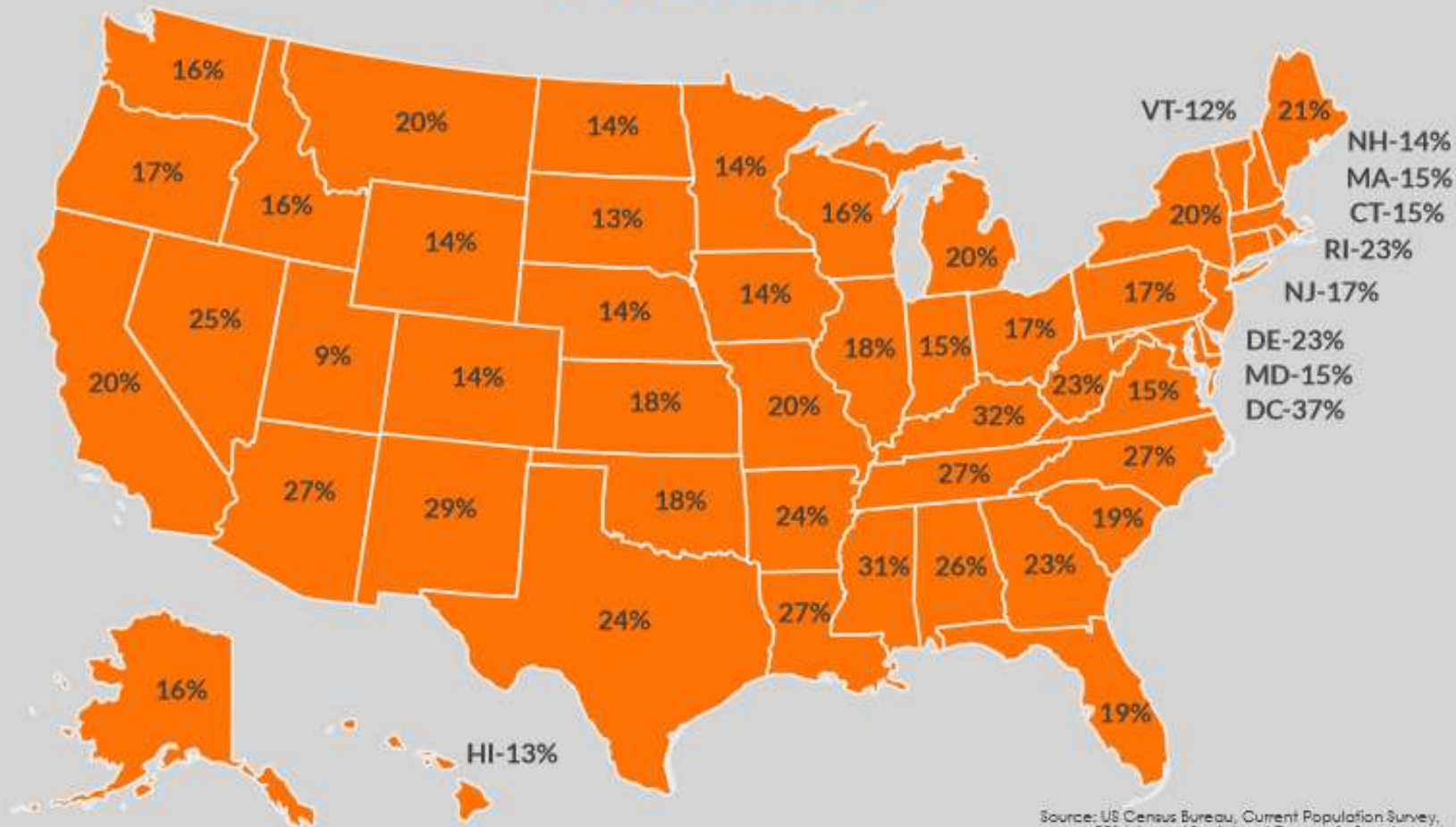


Dateline NBC Breathless



CHILD POVERTY

How many children live in poverty in my state?



Source: US Census Bureau, Current Population Survey, 2014 Annual Social and Economic Supplement

HIGH POVERTY NEIGHBORHOODS

- 42.3% East Harlem children living in poverty
 - In 2012, Federal Poverty Level = \$23,283 for family of four

HOUSING: How New York Lives 2014

- Nearly third of public housing tenants reported water leaks
- East Harlem ranked #1 in average housing concerns for Manhattan

Housing Disparities

- 34% of black households reported ≥ 3 three or more serious maintenance deficiencies in rent-regulated apartments
- 16% of white households

Environment & Health Data Portal

A tool for exploring environmental and health data from New York City



Epi
Query



Asthma
Infographic

click one of the following options

Explore
**Environment
Data**



Explore
**Health,
Behavior &
Population
Data**



Customize a
Dataset
& Download
Data



Download
**Neighborhood
Report**



BAD HOUSING CONDITIONS CAN MAKE **ASTHMA** WORSE

Are buildings in your neighborhood well-maintained? How does your neighborhood compare?

Find data on **Environment and Health Data Portal**



LOW ASTHMA HOSPITALIZATIONS BOROUGH PARK



HIGH ASTHMA HOSPITALIZATIONS HUNTS POINT-MOTT HAVEN




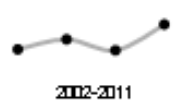
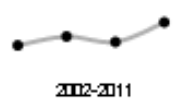
SHARE

Learn More - visit [NYC healthy homes](#)



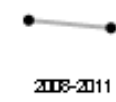
Home Maintenance

Housing conditions that can affect asthma.

	East Harlem	Manhattan	NYC	East Harlem	
				Compared with other NYC neighborhoods*	Trend over time
Homes with cracks or holes (percent), 2011	33.2	16.2	15.7	Worse	 2002-2011
Homes with leaks (percent), 2011	35.8	21.8	20.6	Worse	 2002-2011
Homes with 3 or more maintenance deficiencies (percent), 2011	31.3	14.2	15	Worse	 2002-2011

Pests & Pesticide Use

These indicators measure common urban pests and control methods that can be unsafe.

	East Harlem	Manhattan	NYC	East Harlem	
				Compared with other NYC neighborhoods*	Trend over time
Homes with cockroaches (percent) 2011	42	20.6	24	Worse	 2003-2011
Homes with personal use of pesticide sprays, bombs or foggers (percent) 2003	56.5	31.6	34.6	Worse	Not Available



Pediatric Environmental Health Specialty Unit
Region 2: NJ | NY | PR | USVI



Our Shared Vision: #RxHealthyHomes





Sub-committee

- Puerto Rico + US Virgin Islands

Sub-committee

- Tribal Nations

Sub-Committee

- New Jersey

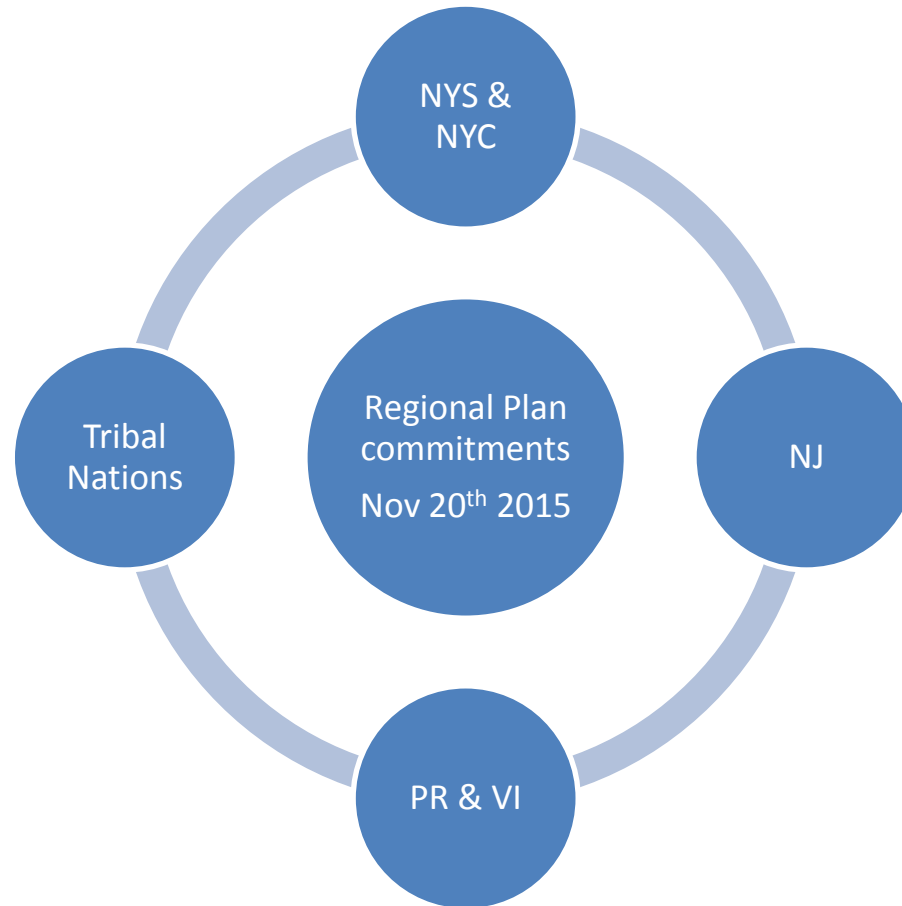
Sub-Committee

- New York City

Sub-committee

- New York State

Regional Summit on Sustainable Funding for In-Home Asthma Prevention Services





**Straight or curved, as we walk,
the path will appear beneath
our feet.**

**You only need to see a few
steps ahead.**

**Keep going. Trust the process.
Enjoy your journey.**

Thanks to all the Partners who made the Regional Summit possible:

- **Federal Region 2:** Environmental Protection Agency, US Department of Health and Human Services (HRSA-CMS-IHS-OASH-CDC), US Department of Housing and Urban Development, Pediatric Environmental Health Specialty Unit
- **State/Territory/Tribal Nation:** NYSDOH, NYCDOHMH, NYCHA, NJDOH, NJDMAHS, PRDH, PR Health Insurance Agency (ASES), SRMT-Health, USVI DOH
- **Asthma Coalitions:** ALA-NE, Asthma Coalition of Long Island, Asthma Coalition of Queens, Hudson Valley Asthma Coalition, NYCAP, PACNJ, PR Asthma Coalition
- **Foundations:** Community Foundation for Greater Buffalo, The Nicholson Foundation, The Asthma and Allergy Foundation of America, St. Louis Chapter; W.K. Kellogg Foundation
- **Health & Housing Policy:** American Academy of Pediatrics District 2 Chapter 3, Asthma Regional Council of New England at Health Resources in Action, Green & Healthy Homes Initiative, New Jersey Health Care Quality Institute, Next Wave, National Center for Healthy Housing
- **Community Organizations:** a.i.r. nyc, InquisitHealth, Isles, Inc., Little Sisters of the Assumption Family Health Service, WEACTION for Environmental Justice
- **Academic Institutions:** Children's Environmental Health Center of Hudson Valley, Icahn School of Medicine at Mount Sinai, Rutgers University, School of Health Professions, University of Puerto Rico-Allied Health Sciences, New York Medical College, University of Puerto Rico-Research Institute for Global Health Promotion and Health Education (IIPESAG)
- **Health Plans & Hospitals:** Healthfirst, Urban Health Plan, NYC Health and Hospital Corporation, Jersey City Medical Center–Barnabas Health, Jersey Shore Medical Center, One City Health-PPS, Saint Barnabas Medical Center-Barnabas Health, YourCare Health Plan/Monroe Plan for Medical Care, New Jersey Primary Care Association, Inc., St. Josephs Healthcare System

We look forward to expanding our partnerships and continuing our work together to achieve our shared vision of healthy homes across Region 2!

This Regional Summit was made possible through the generous support of EPA Regional Administrator Judith Enck and the Region 2 EPA Indoor Air Program via a conference grant to Mount Sinai along with supplemental funding from the NIEHS funded Mount Sinai Trans-disciplinary Center for Early Environmental Exposures and Region 2 PEHSU (NJ, NY, PR and the USVI).